



ANIS
Employers' Association
of the Software and
Services Industry

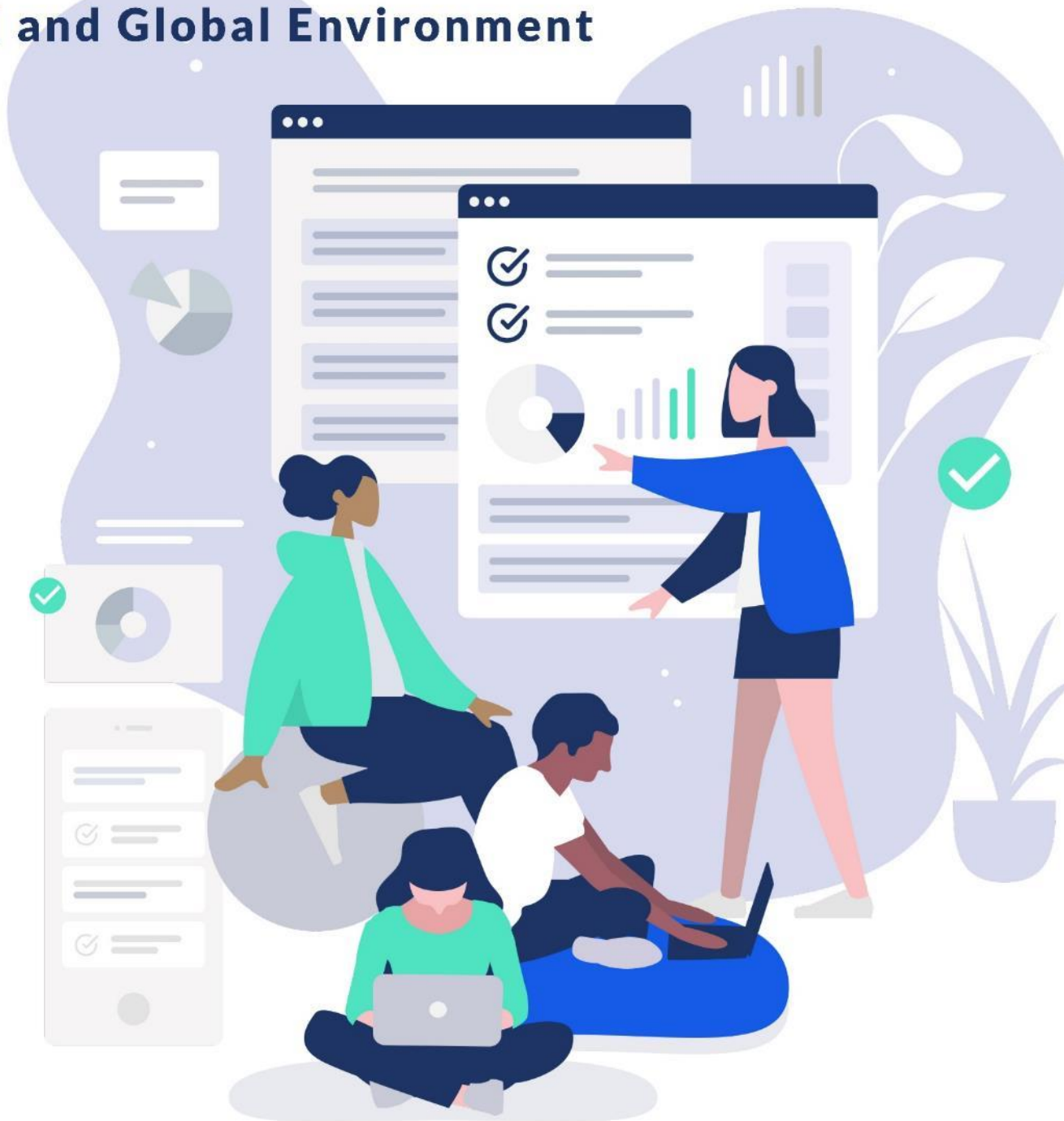


DCI
Quantitative Research

Industry study 2019

Software and IT Services in Romania

Current Situation and Outlook in a Local and Global Environment



Software and IT Services in Romania

Current Situation and Outlook in a Local and Global Environment Industry study 2019

This report was developed by DCI Quantitative Research for the benefit of the Romanian Employers' Association of Software and IT Services (ANIS) and funded by ANIS.

The sources of the analyzed data are the National Institute of Statistics in Romania, the National Bank of Romania and the statistical office of European Union – Eurostat.

Copyright: All rights belong to the Employers' Association of the Software and Services Industry (ANIS).

OBJECTIVES

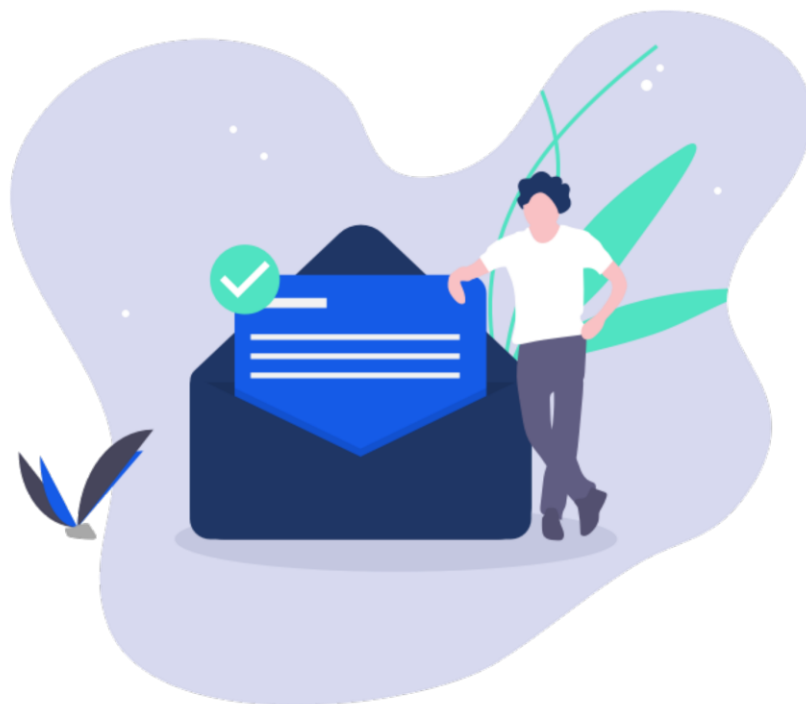
The technology has an exponential impact on every aspect of human life. Digital disruption is a global phenomenon, even if its development and innovation hubs have an uneven geographical spread. It is clear that the Software and IT Services sector plays a great role in our future, but how is it playing it? And more specifically, what input and output indicators of performance have to say about the Romanian Technology Industry? Are the trends upward or downward, on which subcategories and to what extent? Is the Romanian IT industry reaching its market maturity and has it the ability to meet its current needs?

This study is trying to answer some of the above questions, by comparing some qualitative indicators of the Romanian Software and IT services industry and evaluating the extent of growth or decline of each trajectory.

TABLE OF CONTENTS

CHAPTER 1. ROMANIA: GENERAL OVERVIEW	5
1.1. DEFINITIONS.....	5
1.2. MARKET VOLUMES.....	5
1.3. INTERNATIONAL TRADE.....	5
1.4. INVESTMENTS.....	5
1.5. INTELLECTUAL PROPERTY PRODUCTS.....	5
1.6. NUMBER OF COMPANIES.....	6
1.7. NUMBER OF EMPLOYEES.....	6
1.8. EDUCATION AND TRAINING.....	6
CHAPTER 2. ROMANIA IN THE EUROPEAN DIGITAL ENVIRONMENT	7
2.1. THE EUROPEAN DIGITAL ECONOMY AND SOCIETY INDEX, COMPARISON BETWEEN COUNTRIES (2019).....	7
2.2. THE DIGITAL INTENSITY INDEX, COMPARISON BETWEEN COUNTRIES (2019).....	8
CHAPTER 3. MARKET VOLUME (REVENUE)	9
3.1. MARKET VOLUMES (REVENUES) IN THE SW&IT SERV INDUSTRY AND OTHER IT ACTIVITIES IN BILLION EURO, FROM 2015 TO 2022.....	9
3.2. MARKET VOLUMES IN THE SW&IT SERV INDUSTRY IN BILLION EURO BY COMPANY SIZE (IN NUMBER OF EMPLOYEES), FROM 2015 TO 2022.....	9
3.3. CONTRIBUTION OF EACH GEOGRAPHICAL REGION IN TOTAL MARKET VOLUME IN THE SW&IT SERV INDUSTRY IN MILLION EURO, FROM 2017 TO 2020.....	10
3.4. MARKET VOLUMES (REVENUE) IN THE SW&IT SERV INDUSTRY IN MILLION EURO BY GEOGRAPHICAL REGION, FROM 2015 TO 2022.....	11
3.5. CORRELATIONS BETWEEN REVENUES, COMPANY SIZE BY NUMBER OF EMPLOYEES AND THE NUMBER OF COMPANIES ACROSS REGIONS AND TYPES OF IT SERVICES OR ACTIVITIES.....	12
3.6. PRODUCTIVITY PER EMPLOYEE IN THOUSANDS OF EURO IN THE SW&IT SERV INDUSTRY AND OTHER IT ACTIVITIES, FROM 2015 TO 2022.....	13
3.7. PRODUCTIVITY PER EMPLOYEE IN THOUSANDS EURO IN THE SW&IT SERV INDUSTRY BY THE SIZE OF COMPANY, FROM 2015 TO 2022.....	14
3.8. MARKET VOLUMES BY TYPES OF CAPITAL IN THE SW&IT SERV INDUSTRY, FROM 2015 TO 2022.....	15
3.9. TOTAL MARKET VOLUME IN MILLION EURO FOR COMPANIES WITH OTHER IT SERVICES AS THE MAIN ACTIVITY, FROM 2015 TO 2022.....	16
3.10. MARKET VOLUME (REVENUE) IN MILLION EURO GENERATED BY COMPANIES WITH ROMANIAN CAPITAL AND OTHER IT SERVICES AS THE MAIN ACTIVITY, FROM 2015 TO 2022.....	17
3.11. MARKET VOLUME (REVENUE) IN MILLION EURO GENERATED BY COMPANIES WITH FOREIGN CAPITAL AND OTHER IT SERVICES AS THE MAIN ACTIVITY, FROM 2015 TO 2022.....	18
CHAPTER 4. INTERNATIONAL TRADE	19
4.1. BILLION EURO IN IT EXPORTS BY TYPE OF SERVICE, FROM 2017 TO 2022.....	19
4.2. CONTRIBUTION OF IT EXPORT SERVICES IN TOTAL ROMANIAN EXPORTS, FROM 2017 TO 2022.....	20
4.3. THE SHARE OF EXTRA-EU HIGH-TECH EXPORTS FROM TOTAL HIGH-TECH EXPORTS: COMPARISON BETWEEN ROMANIA AND THE EUROPEAN UNION, FROM 2015 TO 2022.....	21
CHAPTER 5. INVESTMENTS	22
5.1. NET INVESTMENTS (IN MILLION EURO) IN IT SERVICES AND RELATED ACTIVITIES, FROM 2015 TO 2022.....	22
CHAPTER 6. INTELLECTUAL PROPERTY PRODUCTS	23
6.1. INTELLECTUAL PROPERTY PRODUCTS IN THE COMPUTER PROGRAMMING, CONSULTANCY, AND INFORMATION SERVICE ACTIVITIES IN MILLION EURO, FROM 2015 TO 2022.....	23

CHAPTER 7. NUMBER OF COMPANIES	24
7.1. NUMBER OF COMPANIES IN THE SW&IT SERV, FROM 2015 TO 2022.....	24
7.2. COMPARISON BETWEEN THE NUMBER OF COMPANIES WITH ROMANIAN CAPITAL AND COMPANIES WITH FOREIGN CAPITAL IN THE SW&IT SERV INDUSTRY, FROM 2015 TO 2022.....	25
7.3. TOTAL NUMBER OF COMPANIES WITH OTHER IT ACTIVITIES, FROM 2015 TO 2022.....	26
7.4. NUMBER OF COMPANIES IN THE SW&IT SERV INDUSTRY AND OTHER IT ACTIVITIES BY GEOGRAPHICAL REGION, FROM 2015 TO 2022.....	26
7.5. NUMBER OF COMPANIES WITH OTHER IT ACTIVITIES AND ROMANIAN CAPITAL, FROM 2015 TO 2022.....	28
7.6. NUMBER OF COMPANIES WITH OTHER IT ACTIVITIES AND FOREIGN CAPITAL, FROM 2015 TO 2022.....	29
7.7. NUMBER OF COMPANIES IN THE SW&IT SERV INDUSTRY AND OTHER IT ACTIVITIES BY GEOGRAPHICAL REGION AND TYPE OF CAPITAL, FROM 2015 TO 2022.....	30
CHAPTER 8. NUMBER OF EMPLOYEES	31
8.1. THE AVERAGE NUMBER OF EMPLOYEES IN THE SW&IT SERV INDUSTRY AND IN OTHER IT ACTIVITIES, THOUSAND PEOPLE, FROM 2015 TO 2022.....	31
8.2. THE AVERAGE NUMBER OF EMPLOYEES IN THE SW&IT SERV INDUSTRY BY THE SIZE OF COMPANY, ANNUAL SHARES FROM 2017 TO 2020.....	32
8.3. THE AVERAGE NUMBER OF EMPLOYEES IN THE SW&IT SERV INDUSTRY BY TYPE OF CAPITAL, FROM 2015 TO 2022.....	33
8.4. THE AVERAGE NUMBER OF EMPLOYEES IN COMPANIES WITH OTHER IT ACTIVITIES, FROM 2015 TO 2022.....	34
8.5. AVERAGE NUMBER OF EMPLOYEES IN THE SW&IT SERV INDUSTRY AND OTHER IT ACTIVITIES BY GEOGRAPHICAL REGION, FROM 2015 TO 2022.....	34
CHAPTER 9. EDUCATION AND TRAINING	36
9.1. THOUSANDS OF EMPLOYED PERSONS WITH ICT EDUCATION IN ALL SECTORS OF WORK, FROM 2015 TO 2022.....	36
9.2. EMPLOYED ICT SPECIALISTS BY GENDER, EDUCATION AND AGE (THOUSAND PEOPLE), FROM 2015 TO 2022.....	37
9.3. COMPANIES IN THE ICT SECTOR (10 PERSONS EMPLOYED OR MORE) THAT PROVIDED ICT TRAINING TO DEVELOP/UPGRADE THEIR EMPLOYEES' SKILLS, FROM 2015 TO 2022.....	38
9.4. NUMBER OF GRADUATES BY PROGRAM ORIENTATION WITH AN ICT PROFILE AND GENDER, FROM 2015 TO 2022.....	39
METHODS	41
ANALYSIS PROCEDURE.....	41
DATA SOURCES.....	41
REFERENCES	42
LIST OF FIGURES	43
LIST OF TABLES	43
ENDNOTES - SOURCES OF DATA FOR EACH FIGURE	44



For additional information,
please write us at
office@anis.ro